

## Web Services

- Attach custom fields to datasets
  - add fields with different types: number, date, string
- ability to get, set and remove data
- eventual use in DataShop web application

## Push-button Import

- Import your dataset into DataShop at your convenience
- Verify and import with the click of a button
- Use DataShop tools on your new dataset within minutes

## KC Model Cross Validation Values

- 3-fold validation of Additive Factors Model
- Display values on KC Models page

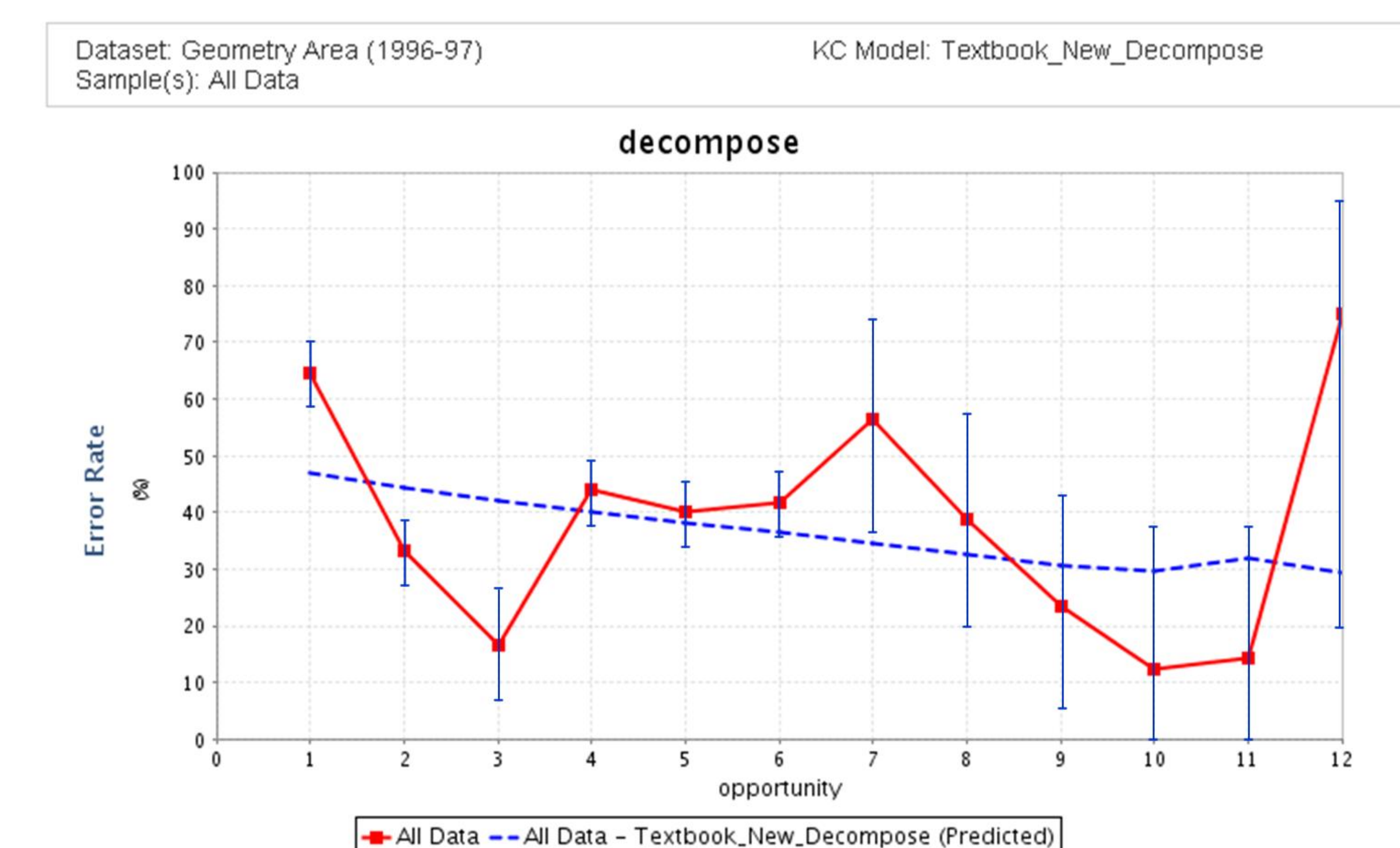
## Millisecond Support

Timestamps for this dataset were recorded to the millisecond.			
Step Time	Step Start Time	Step End Time	First Transaction Time
2005-08-22 04:45:49.0		2005-08-22 04:45:49.0	2005-08-22 04:45:40
2005-08-22 04:46:00.0	2005-08-22 04:45:49.0	2005-08-22 04:46:00.0	2005-08-22 04:45:51
2005-08-22 04:46:00.0	2005-08-22 04:45:56.0	2005-08-22 04:46:00.0	2005-08-22 04:46:00
2005-08-22 04:46:15.0	2005-08-22 04:46:00.0	2005-08-22 04:46:15.0	2005-08-22 04:46:10

## What would you like?

- Vote for features to tell us what you'd like to see next
- View and add to our Feature Wish List on the PSLC Theory Wiki:  
[http://www.learnlab.org/research/wiki/index.php/DataShop\\_Feature\\_Wish\\_List](http://www.learnlab.org/research/wiki/index.php/DataShop_Feature_Wish_List)
- Discuss features on the comments section of that feature's page
- We'll use these votes and dialogue to prioritize features

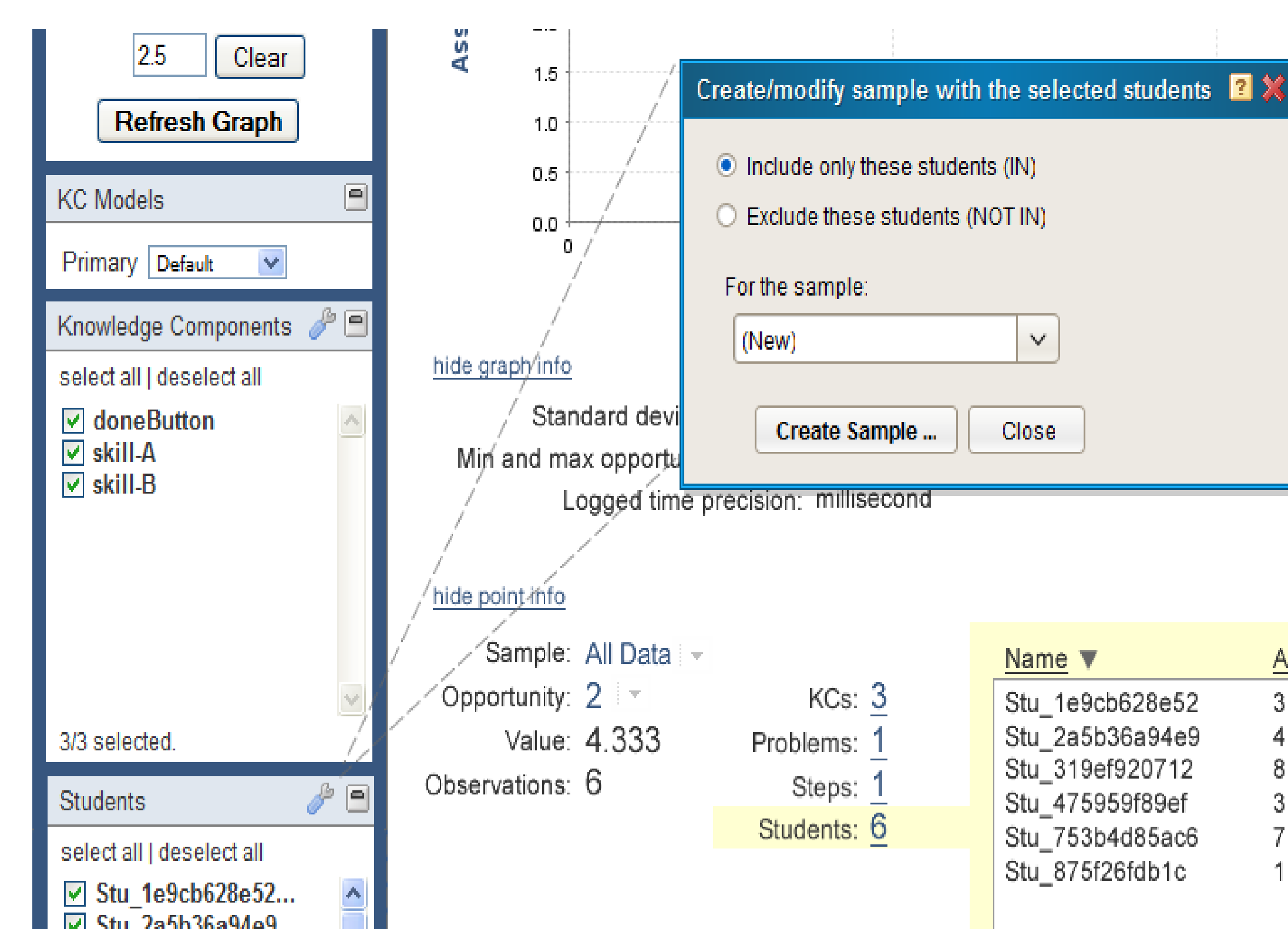
## Error Bars



## Annotations

- Annotate reports/pages within the web application to collaborate with others
- Capture and store data integrity issues for better documentation and increased integrity of analyses
- Save your selections within a session, return to that dataset at a later time, and reload your selections

## Student Filters



## And many more!

- Dataset Metrics
- Inclusion of error-attribute algorithm KC-step assignment in transaction export (KC assignment used when graphing learning curves)
- Latency Y-axis Options on Performance Profiler
- LFA on Sample